

Plugs & Connectors

Rear housing is beveled so a cord won't get caught on stairs, equipment, etc.

Ribbed nylon housing assures excellent impact resistance and secure gripping.

Neoprene gasket helps keep dirt and dust from entering termination area.

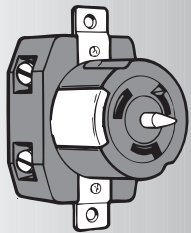
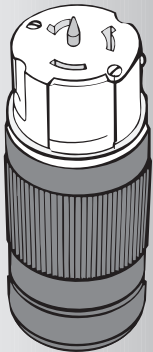
Other Plug Features

Stainless steel plug sleeve provides greater strength and protection.

Non-metallic shell around the plug sleeve eliminates exposed metal parts.

Other Connector Features

Nylon connector body has excellent chemical resistance and superior electrical insulating properties.



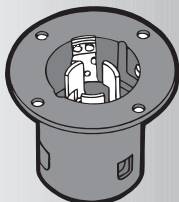
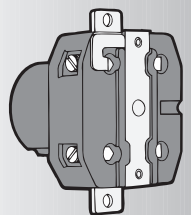
Receptacles

Glass-filled nylon body provides excellent impact, heat and chemical resistance, as well as dimensional stability.

Mounts in standard FD box.

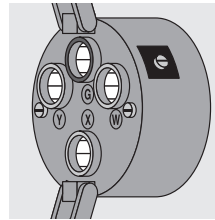
Heavy-duty brass mounting strap and ground system provide a low resistance ground path and superior corrosion resistance.

Terminals are clearly marked in accordance with the National Electrical Code.



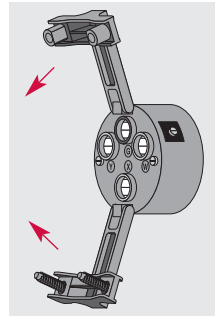
Flanged Inlets

Marinco 50 amp flanged inlets incorporate the same features as Marinco 50 amp plugs. They are housed in a flanged nylon housing that is ideal for equipment mounting.



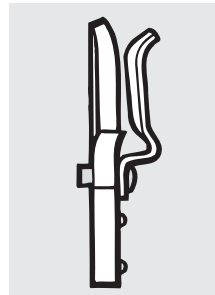
Wire Entrance Holes

Color coded wire entrance holes make devices simple and easy to wire.



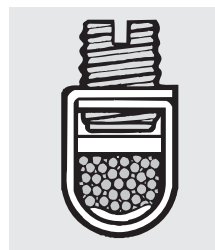
Cord Clamps

Cord clamp opens wide for direct terminal access. The added strip length provides easy insertion of wire into the terminals.



Receptacle & Connector Brass Contacts

Oversized brass contacts provide a low resistance connection and superior corrosion resistance. Longer contacts inside the connector body assure stronger, tighter fitting contact points.



Terminal

Marinco's unique Perma-Lock™ tempered brass lug with nickel plated screw totally captures and compresses the wire. As the Perma-Lock™ terminal screw tightens down on the contact tang, it compresses the wire underneath the tang, causing the screw to exert an upwards lift on the collar overleaf. This lifting action "locks up" the screw's threads. Stress-relieving of the terminal is virtually eliminated. Heat-cycling and vibration cannot loosen the screw.